

CENSUS TRACT OUTLINE MAP (CENSUS 2000)

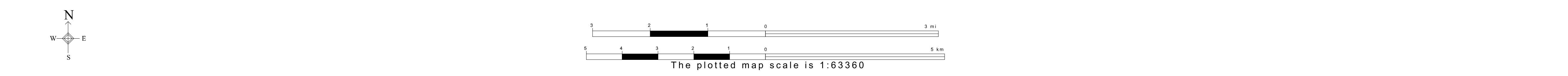
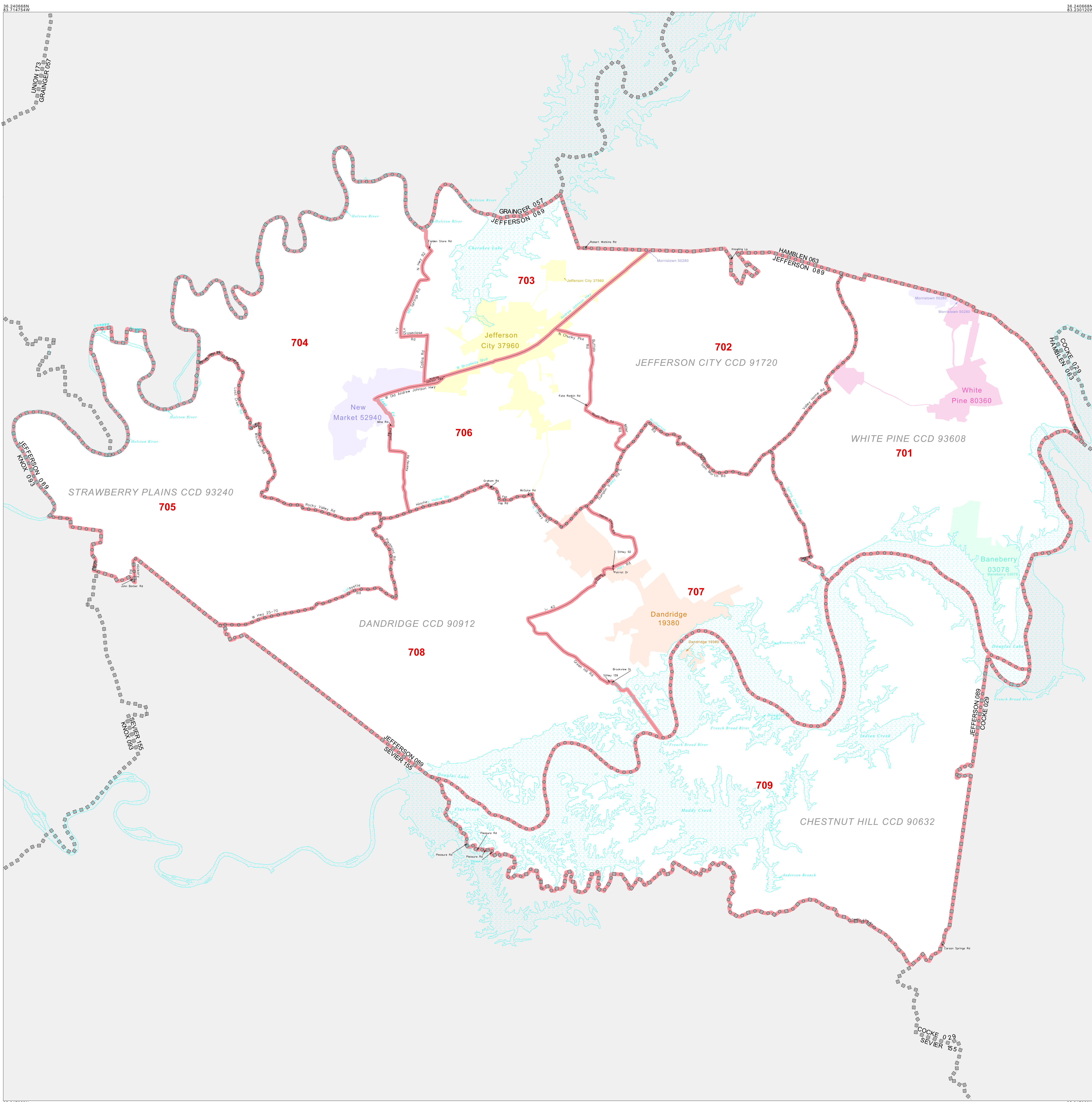
ABBREVIATED LEGEND

| SYMBOL | NAME STYLE |
|--------|-------------------------|
| ***** | INTERNATIONAL |
| ***** | AIR (FEDERAL) |
| ***** | Trust Land |
| ***** | OTSA / TDSA |
| ***** | TRIBAL SUBDIVISION |
| ***** | AIR (State) |
| ***** | SDA/SA |
| ***** | STATE |
| ***** | COUNTY |
| ***** | CENSUS COUNTY DIV. |
| ***** | Consolidated City |
| ***** | Incorporated Place |
| ***** | Census Designated Place |
| ***** | Census Tract |

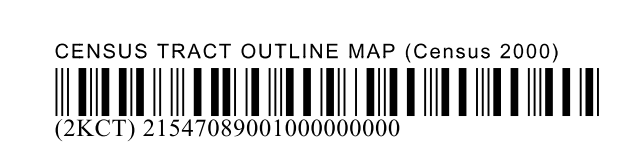
Abbreviation Reference: AIR = American Indian Reservation; Trust Land = OTF-Reservation Trust Land; OTSA = Oklahoma Tribal Statistical Area; TDSA = Tribal Designated Statistical Area; Tribal Subdivision = American Indian Tribal Subdivision; SDA/SA = State Designated American Indian Statistical Area

| FEATURES | FEATURES |
|--------------------|---------------------|
| All Roads | Stream/Shoreline |
| Epiroad | Intermittent Stream |
| Flow/Power Line | River/Lake |
| Physical Feature | Glacier |
| Navigable Boundary | |
| Military | |

Inset Out Area



ST: Tennessee (47)
 COU: Jefferson (089)
 SHEET 1 OF 1 PARENT SHEET



All legal boundaries and names are as of January 1, 2000. The boundaries shown on this map are for Census Bureau statistical data collection and tabulation purposes only; their depiction and designation for statistical purposes does not constitute a determination of jurisdictional authority or rights of ownership or entitlement. U.S. DEPARTMENT OF COMMERCE Economics and Statistics Administration U.S. Census Bureau