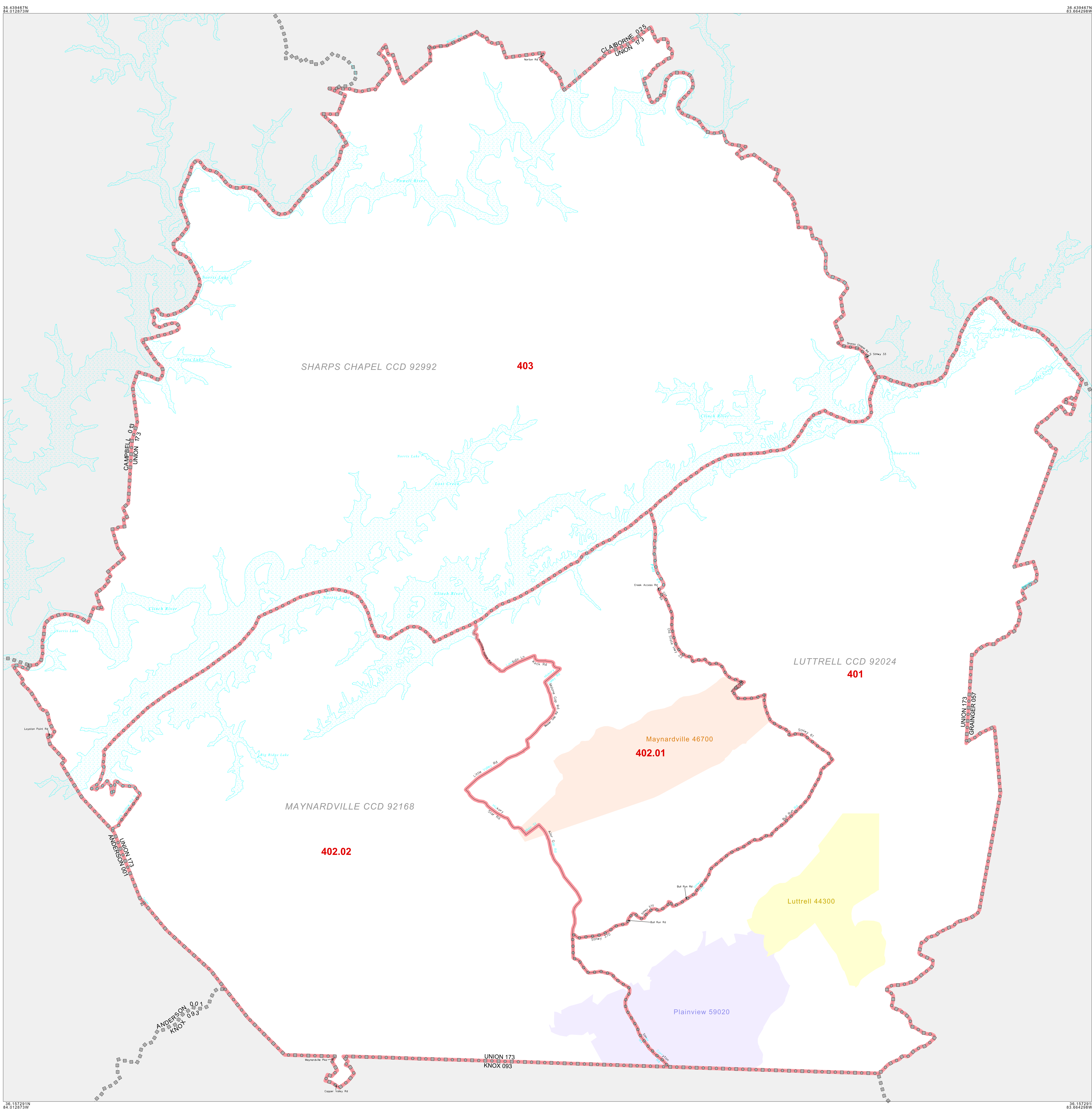


# CENSUS TRACT OUTLINE MAP (CENSUS 2000)

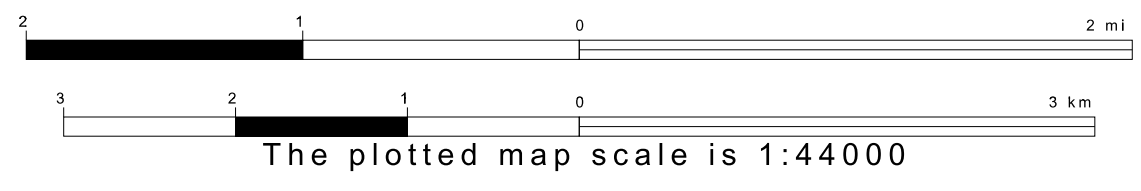
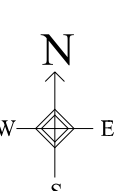


### ABBREVIATED LEGEND

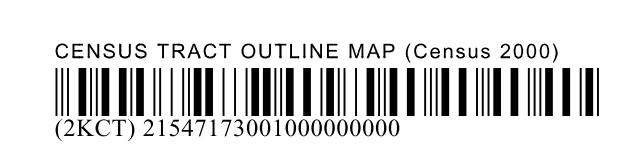
SYMBOL	NAME STYLE
☆☆☆☆	INTERNATIONAL
☆☆☆☆	AIR (FEDERAL)
☆☆☆☆	Trust Land
◇◇◇◇	OTSA / TDSA
◇◇◇◇	TRIBAL SUBDIVISION
//////	AIR (State)
◇◇◇◇	SDA/SA
####	STATE
####	COUNTY
○○○○	CENSUS COUNTY DIV.
○○○○	Consolidated City
■■■■	Incorporated Place
■■■■	Census Designated Place
■■■■	Census Tract

Abbreviation Reference: AIR = American Indian Reservation; Trust Land = OTF-Reservation Trust Land; OTSA = Oklahoma Tribal Statistical Area; TDSA = Tribal Designated Statistical Area; Tribal Subdivision = American Indian Tribal Subdivision; SDA/SA = State Designated American Indian Statistical Area

FEATURES	FEATURES
All Roads	Stream/Shoreline
Epiroad	Intermittent Stream
Play/Paver Line	River/Lake
Physical Feature	Glacier
Navigable Boundary	
Military	



ST: Tennessee (47)  
 COU: Union (173)  
 SHEET 1 OF 1 PARENT SHEET



All legal boundaries and names are as of January 1, 2000. The boundaries shown on this map are for Census Bureau statistical data collection and tabulation purposes only; their depiction and designation for statistical purposes does not constitute a determination of jurisdictional authority or rights of ownership or entitlement. U.S. DEPARTMENT OF COMMERCE Economics and Statistics Administration U.S. Census Bureau